

Eurimage QuickBird distribution

Eurimage is the Exclusive Reseller of QuickBird world-wide data for all the customers (end-users/license owners) located in Europe and the Mediterranean Basin— except for Italy.



Note that there is no limitation on the area of the world that can be imaged; the only constraint is that images over Israel cannot have a resolution better than 2 meters.

QuickBird Order Form

Eurimage will accept orders submitted on the Eurimage QuickBird Order Form to Eurimage Customer Service (+39) 06 40694 305. The order form is available as a pdf file at:

www.eurimage.com/products/products.html

Geographic Location

Location Name: specify a name for your Area of Interest (Aoi), that will help you to identify your order ,e.g. Rome, South Germany, Area X1 (for confidentiality). This information will also be written on the invoice.

Area definition: your Aoi is defined by its geographic co-ordinates on a WGS84 datum, which must be provided in decimal degrees. There are different ways to define an area:

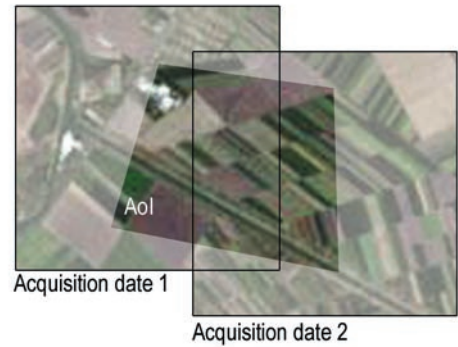
- lat/long of the four corners of a rectangle
- a polygon with up to 999 vertices (if you are ordering NITF format only 4 points are allowed), to be provided as shapefile (including *.shp , *.shx and *.dbf)
- lat/long of centre point and the width and height of the area (e.g. 10*8 Km = 80 Km²)

Note that QuickBird images have a certain geolocation accuracy. For this reason it is always advisable to add a “buffer” around your polygons in order to be sure that your Aoi is completely contained in the final product delivered.

The final area of your Aoi is calculated with the “Area Under the Curve Method”.

Order Parameters Archive

The DigitalGlobe production system, given an Aoi and the scene IDs of archived scenes, cuts out from each scene the complete surface which intersects the Aoi. e.g: in the example below the customer will receive two images from 2 acquisition dates: the overlap is provided twice, but charged only once.



The proposed combination of dates must minimize the number of scenes to be used: In the diagram below, dates 2 and 3 can be accepted but not dates 1, 2 and 3.



Tasking

Standard: for customers requiring a new collection with a longer collection window and more collection attempts. The minimum image acquisition window is 14 days. Maximum order size is 10,000 km².

Priority: for customers who require a short term collection, an accelerated delivery timeline, and a competitive advantage over orders placed as Standard Tasking order type. The minimum acquisition window is 7 days.

Rush: The highest priority. The acquisition window is from 1—14 days for a single shot with no cloud cover guarantee.

Start Collection Date: must be at least 2 days from the ordering date (for Standard Tasking).

End Collection Date: you can suggest your expected end date for closing the acquisition window (considering also the kind of Tasking Type you are requesting). This date has anyway to be discussed with Eurimage before your order will be accepted, as it has to pass Technical and Competitive Feasibility.



Maximum Off-Nadir Angle: The range is 0—45°; 0—25° is suggested for products to be ortho-rectified.

Imagery

See the *Eurimage Products and Services Guide* for complete product details.

Basic: the least processed of the QuickBird Imagery Products, designed for customers having advanced image processing capabilities. Basic Imagery, together with the supplied attitude, ephemeris, and camera model information, is suitable for advanced photogrammetric processing (i.e. ortho-rectification). Basic Imagery products are radiometrically corrected and sensor corrected, but not geometrically corrected nor mapped to a cartographic projection and ellipsoid. In this way this products maintains the original geometry of acquisition. Note that the minimum order is a full scene (272 km²).

Standard: suitable for a wide variety of applications. Standard Imagery products are radiometrically corrected, sensor corrected, geometrically corrected, and mapped to a cartographic projection. Standard products are resampled to 0.6 or 0.7 m (Pan/Pan-sharpened) and 2.4 or 2.8 m (MS) ground sample distance. The **Ortho-ready Standard** product has no DEM applied, but a base elevation (an average of the ordered area) and is suitable for further processing with RPCs. Note that the minimum order is 64 km² (100 km² for Rush Tasking)

Basic Stereo: in-track stereo acquisition available only as a single pair of Basic processed scenes; no cloud-cover threshold.

QuickBird Products:

| | Basic/ Stereo | Standard/ Ortho-ready |
|-----------------------|------------------|--------------------------|
| PAN | • | • |
| MS | • | • |
| Bundle PAN + MS | • | • |
| Pan-sharpened 3 bands | | • |
| Pan-sharpened 4 bands | | • |

Processing parameters

Resampling Kernel: standard products have a choice of resampling algorithms, from Nearest Neighbour to 4*4 Cubic Convolution

File Format: the choice is between GeoTIFF (default) and NITF. Please note that multi-spectral and pan-sharpened products are made available as a single file with 3 or 4 layers corresponding to the 3 or 4 radiometric intervals.

Dynamic Range Adjustment (DRA): DigitalGlobe offers customers a DRA option, which will visually enhance your QuickBird Imagery

by performing color correction and contrast enhancement. This product is recommended for customers who do not have the tools to apply visual enhancements themselves, or who want an image stretched and ready to display straight out of the box. It is not recommended for customers intending to perform scientific analysis or spectral classification. The DRA option is offered on all 8 bit, Standard and Ortho-ready Imagery Products. 16 bit data is not offered with this option because software tools often require special handling when displaying 16 bit data, thus defeating the purpose of delivering easy to use, pre-stretched imagery.

Bit Depth: the choice is between the original 11 bit in a 16-bit file, or an 8-bit file. The original 11 bit are resampled to 8 with a linear regression between 0 and the last information pixel set up as 256.

Delivery Parameters Tiling

The tiling option for QuickBird images has been defined to reduce file size and processing needs and to fit, if possible, images on CD-ROM when requested.

- Basic Imagery, which is provided on a full-scene basis, cannot be tiled and therefore cannot be delivered on CD-ROM
- Pan-sharpened images are better tiled, as they can easily exceed 2 Gb in size. As some software will not open such large files you must specify on the Order Form the software to be used with the data.
- Production size of irregular areas must be calculated from the minimum bounding rectangle
- The maximum area (of the minimum bounding rectangle) for a Pan image fitting on a single CD-ROM without tiling is 95 km²
- Products which could exceed 2Gb (eg: a full Standard, 16-bit, panchromatic scene acquired at a high angle at 60cm resolution) are better tiled

Pixel Tiling: there are only 3 options: 8k (8,192 pixels) x 8k, 14k x 14k or 16k x 16k

Map Tiling: dimensions are to be given in metres, for a file size between 1 and 400 km². The ration of X:Y or Y:X must not exceed 3. Any overlap (not recommended) must be exactly divisible by the GSD and overlap should not be greater than 1/3 of the side. If no overlap is specified the tiles will be edge-mapped.



Ordering Procedure

After receiving your Order via fax (if necessary with the addition of an E-mail for the polygon), Eurimage Customer Service will check your order parameters. A technical and competitive feasibility check will also be made. Some parameters (typically the End Collection Date) may have to be slightly changed to make the order acceptable.

Once your order has passed all the feasibility checks, Eurimage Customer Service will send a Order Confirmation with the detail of all the parameters of the order. Customers will have to sign it for acceptance and send it back to Eurimage Customer Service via fax within 12 hours of the original receipt.

Once your Tasking has been validated and accepted, it is not possible to guarantee that the images will be acquired. Eurimage will make its best effort to satisfy its customers, but many different constraints (including cloud cover, operational needs, and customers with higher priority) could prevent your order being fulfilled.

If during the acquisition window your image is not acquired, Eurimage Customer Service will contact you to verify if you wish to cancel the order (with no fee) or if you prefer to extend the window ending date.

Once your image is acquired and if it meets DigitalGlobe quality product specifications (Standard and Priority Tasked images are guaranteed to be at least 80% free from clouds, and the sun to be higher than 15° above the horizon), your order will be confirmed, and the image processed and shipped to you via courier. Alternative delivery methods can be discussed on ad hoc basis for individual projects.

Order Cancellation Fees:

Tasking Orders

Prior to first imaging plan as performed by the satellite operator: Full Refund

After first imaging plan: No Refund

Archive Orders

Prior to processing: Full Refund

During or Post processing: No Refund

Invoice:

The final invoice will contain the following information:

- Location Name (as defined by you)
- Surface of your requested area
- Price for km2
- Tasking Uplift
- Licence uplift
- Total price
- Discount percentage and equivalent amount
- Shipping Charges
- Total

In the invoice you will also find all the details needed for a correct bank transfer to Eurimage accounts.

Rejection:

If the customer thinks that the product received does not meet the quality standard or does not have the characteristics requested (processing, media, ...), the problem must be reported to Eurimage Customer Service within 15 days from the receipt of the product, and then returned to Eurimage as soon as possible. Rejections after 15 days will not be considered.

Maximum/minimum order area

Minimum Order Area

| | | |
|-------------------------------|---------------------------|--------------------------------|
| BASIC | | 1 scene (272 km ²) |
| STANDARD/STANDARD ORTHO-READY | Archive | 25 km ² |
| | Standard/Priority Tasking | 64 km ² |
| | Rush Tasking | 100 km ² |

Maximum Order Area

| | | |
|-------------------------------------|------------------------------------|------------------------|
| BASIC/STANDARD/STANDARD ORTHO-READY | Archive; Standard/Priority Tasking | 10,000 km ² |
| | Rush Tasking | 2,500 km ² |

Approximate file size in Mb for QB tiles

| TILING OPTION | BIT DEPTH | PAN | MS | 3-BANDS | 4-BANDS |
|---------------|-----------|-----|-----|---------------|---------------|
| | | | | PAN-SHARPENED | PAN-SHARPENED |
| 8k | 8 | 75 | 20 | 200 | 270 |
| | 16 | 150 | 40 | 400 | 540 |
| 14k | 8 | 210 | 55 | 620 | 825 |
| | 16 | 420 | 110 | 1250 | 1650 |
| 16k | 8 | 300 | 75 | 800 | 1080 |
| | 16 | 600 | 150 | 1600 | N/A |



Contact Points

Eurimage S.p.A.,
Via D'Onofrio 212,
00155 Roma, Italy
www.eurimage.com

Customer Service:

Fax: +39/06/40694/305
E-mail: cust.service@eurimage.com

Customer Service is the customer's main interface. It is responsible for every topic related with orders (from placing to shipment and invoicing) and for data search.

- Marissa Ancona, tel. +39/06/40694/302, ancona@eurimage.com
- Marina Iadicola, tel. +39/06/40694/303, iadicola@eurimage.com
- Manuela Elia, tel. +39/06/40694/321, elia@eurimage.com
- Ilaria Tramacere, tel +39/06/40694/320, tramacer@eurimage.com
- Giulia Tamacoldi, tel +39/06/40694/304, tamacoldi@eurimage.com

Help Desk:

Fax: +39/06/40694/305
E-mail: info@eurimage.com

Help Desk is responsible for every technical issue, from problems in using the products to the quality of the products.

- Axel Oddone, tel. +39/06/40694/233, oddone@eurimage.com
- Maria Teresa Ferri, tel. +39/06/40694/223, ferri@eurimage.com
- Filippo Girard, tel. +39/06/40694/324, girard@eurimage.com

Full information on the QuickBird products distributed by Eurimage are available from www.eurimage.com

