
About this Chapter

This chapter explains DESCW's screen interface and how to use it. If you are new to using DESCW, you will learn how to choose commands, select dialogue box options, and work with the program's windows. Even if you are an experienced user, you will find valuable information about new and improved features such as the **Toolbar** and the **Layers Map**.

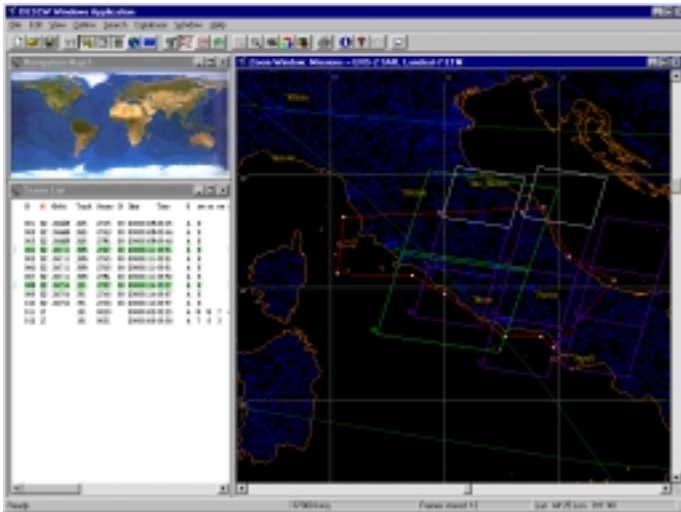
Starting DESCW

You can start DESCW by selecting it from the **Programs Menu**, or double-clicking the `DESCW.EXE` file (the executable file with the satellite icon) in Explorer. A dialogue box will be displayed with the Tip of the Day or with the What's New screen (the default); you can choose **Next Tip** or **Close** the window. Before closing, you can take the option to request that this dialogue box is not displayed at start-up.



What's on the DESCW Screen?

This section provides an overview of the major elements of the DESCW screen: its **Menu**, the **Toolbar**, and the **Status bar**.



At the top of the screen the **Menu bar** is displayed. Just below it, the **Toolbar** allows quick access to commonly used commands.

You can choose a command by:

- Selecting it from a menu
- Clicking a **Toolbar** button with the mouse (for most commands)

At the bottom of the DESCW screen the **Status bar** gives information about the current active task.

When you first start DESCW, the **Toolbar** is displayed below the **Menu bar**.

Commands on each of the menus are detailed below with the corresponding **Toolbar** icon (not all commands have a Toolbar equivalent).

File Menu



New

Starts a new search session, deleting any search parameters from the previous session.



Load Parameters

Loads previously saved search parameters or user area.



Save Parameters

Saves all the current search parameters or only the Scene List content.

Load User Area

Loads a pre-defined user area.

Save User Area

Saves only the user area (the defined polygon, quadrilateral or circle).

Load User Request

Loads a pre-defined user request.

Save Zoom Window

Saves a picture of the Zoom window with a choice of format (BMP, JPEG, EPS, etc.).

Collections

Create Interchange Format File(s)

To save the Scene List content in the DESCW Interchange format.

Convert Interchange Format to binary

To convert a DESCW Interchange format file into a DESCW binary file.

Print Setup

To select and customise the printer.



Print

Lets you:

- Print the Zoom Window

- Print the Scene List Window.

Print preview

Shows a preview of the two print options.

Print setup

Opens the Printer Setup dialogue window to select printing options.

Edit Menu

Delete Unselected

Deletes unselected scenes in the Scene List Window.



Undo

Reinstates deleted scenes in the Scene List Window and Zoom Window.



Modify Colours

Modifies the colours used by DESCW to distinguish the various elements in the Zoom Window and the Scene List Window.

View Menu



Navigation map

Opens/closes the Navigation Map Window.



Zoom Window

Opens/closes the Zoom Window.



Scene List

Opens/closes the Scene List Window.



Lat-Long Grid

Enables/disables the geographical grid on the Zoom Window.



Satellite Sub-track

Shows satellite tracks of the selected missions.

Satellite Position

Shows the Satellite(s) position, for some satellites only, according to the computer date/time.



Polar co-ordinates

Toggles between the Mercator and the Polar projection in both the Navigation Map and the Zoom Windows (Mercator is the default).

Show Area Names

Displays the name of the user defined search Area(s) in the Zoom Window.

Full Coverage

Displays all the scenes retrieved by the query in the Zoom Window without saving them in internal storage. This option closes the Scene List Window.

Selected Coverage

Enables the saving in internal storage of the scenes retrieved by the query in the Zoom Window (details of saved scenes can then be displayed in the Scene List Window, thus allowing you to further define your scene selection). By default only the first 800 scenes will be saved.

Toolbar

Shows/hides the **Toolbar**. Under Windows 95 the Toolbar is floating.

Status bar

Shows/hides the **Status bar**, used for displaying system messages, quantity of retrieved scenes, area names and sizes.



Zoom x 2

Zooms in within the Zoom Window.



Zoom ÷ 2

Zooms out within the Zoom Window.



Scene Details

Opens the View Scene Details Window.

Split View

Allows the Quick Look to be opened in multiple windows.

Station Availability

Shows the periods of availability of those Ground Stations that operate on campaign basis.

Plan Availability

Shows the periods of availability of ERS ascending passes for the SAR in Image Mode.

Define Menu



Mission

Opens the Missions and Filters Window, where the user can define which missions to include in the search and the search parameter settings for the time range of acquisition, acceptable cloud cover, acquisition station, etc.



Area

Changes the cursor into a cross-hair with which the user can define a polygonal search area in the Zoom Window. This option also deletes any previously defined search area.



Area Coordinates / Name

Opens the User Area Definition Window, where an area can be defined as one of:

- a quadrilateral of Lat/Long co-ordinates
- a circle with a radius in km around a Lat/Long co-ordinate
- an area via its name from a pre-defined list, resulting in a circle or polygon around a place (city or country)

The selection is displayed as a polygon on the map in the Zoom Window.

Note that the first two definition options also let you enter a name for the geographical area chosen (through the input dialogue windows or in the **Status bar**).

Quick Look Directory

Defines the drive and directory on which the Quick Looks corresponding to the scene selections can be found.

Scene List limit

Permits extending the limit of 800 scenes up to 10.000. Note that increasing the limit will require more memory and that the scene list window can in any case display only a maximum of 2000 scenes.



Map Layers

Defines which layers of geo-political information should be displayed on the map in the Zoom Window and the resolution to use.

Thematic Maps

Opens the Thematic Map Window allowing you to select the required map(s) and value range(s).

User Info

To retrieve on-line data from DESCW some user data are requested, such as e-mail and FTP port.

Remote Server Info

Reserved for future use.

Log In Info

To retrieve on-line full-resolution data, or to access restricted features a User Identification is requested.

Search Menu



Start

Starts a search with the selected parameters.

Enable Auto Search

When this option is selected, the search will automatically start after a new parameter has been defined. Auto Search is enabled by default, but you may prefer to disable it while getting to know DESCW.

Enable Area Filter

This option enables/disables the geographical Area filter defined by the polygon in the Zoom Window. If enabled, only scenes wholly or partly in the search area polygon will be included in the Search. If the filter is disabled, the Search facility will locate all scenes within the area shown by the Zoom Window. The filter is enabled by default.

Database Menu

Image -> Text Database

Opens the Image Database dialogue box used for searching images and documents from specific collections.

Window Menu

Reposition Windows

Returns the DESCW windows to their default positions.

Help Menu



About DESCW

Shows the software version, credits and computer status information.

Tip of the Day

Shows the Tip of the Day dialogue.

Show News

Opens a dialogue box that shows the new features of the version in use.



Help

Launches the DESCW on-line Help facility.

Status Bar

The **Status bar** at the bottom of the DESCW screen provides information about the active process and also gives access to certain functions.

To hide the **Status bar**, disable the **Status bar** option from the **View Menu**.



From the left, the fields on the bar show you:

- Information about the current process
- User search area name and size. If you move the cursor over the field it changes to a hand holding a pencil. Click on the field and a label 'Change User Area Name' is displayed; click on the label and a dialogue box is displayed letting you change the User Area Name. The software automatically computes and shows the area size in km²
- Number of scenes retrieved by the most recent query
- Geographical co-ordinates in degrees and minutes of the mouse position in the Zoom Window

The Main DESCW Windows

The DESCW software uses three major windows:



- *Navigation Map Window*

The Navigation Map Window is a small map of the Earth where you can choose the area of interest - the Focus Rectangle - that will be displayed in the Zoom Window.

- ***Zoom Window***

The Zoom window is displayed either by selecting the **Zoom Window** option on the **View Menu** or by clicking, or dragging, on the Navigation Map Window. It expands the area contained in the Focus Rectangle from the Navigation Map Window, at a level of detail determined by the **Map Layers** option. You can zoom in and out using the **Zoom** options on the **View Menu**. Search area polygons can be drawn in this window. When a search has been completed, frames outlining each of the scenes found are displayed in the window.

- ***Scene List Window***

When a search has been completed this window will list the scenes found. Moving the cursor over a column in the window will highlight all scenes with the same value in that column. For example, if the cursor is over a number in the Track column, DESCW will highlight all scenes with the same Track Number; the same scenes will also be highlighted in the Zoom Window. Double clicking on the Status column of a scene will display its Quick Look (if available) asking for a CD-ROM or opening a FTP connection with one of the servers. Clicking on the Status column with the **Scene Details** option selected displays the View Scene Details Window.

The complete features of the Scene List Window are detailed in the Reference section of this manual.

Other DESCW windows allow you to define search parameters, view results, etc.

- ***Mission Window***

Allows you to select the satellite mission(s) to use in the search, and to set search filters such as Acquisition Date Range, Acquisition Station, Acceptable Cloud Cover, etc.

- ***Viewer Window***

Displays Quick Looks (if available) when you click on the Status column in the Scene List Window. This window can be modified by the **Split Views** option.

- ***Scene Details Window***

Displays the scene inventory information.

- ***ERS Shifted Scene Window***

Lets you display and calculate the offset for ERS Shifted Scenes.

- ***Landsat Floating Scene Window***

Lets you position and select Floating Full Scenes, Quarter Scenes and Mini Scenes

- ***User Area Definition Window***

Lets you select your area of interest as a rectangle defined by Lat/Long coordinates, as a circle of selectable radius around a Lat/Long-defined point or as a place name selected from a displayed list. See Chapter 4 for further details.

- ***Interferometric Baseline Window***

Displays the baseline values for the selected track and frame combination for ERS-1 and ERS-2.

- ***Sub-scene Selection Window***

Allows authorised users to select and download a portion of a full resolution scene from a remote server.

- ***Thematic Map Window***

Allows you to select the thematic map(s) to apply to the current search. Two main representations are possible:

- show the result of the combination of active thematic maps and categories
- show all the categories of the currently selected thematic maps in colour scale

DESCW Help

DESCW HELP is a separate program from DESCW. You invoke DESCW Help by clicking the **Help** button on the **Toolbar** or through the **help** option of the **help menu**. Use PROGRAM MANAGER, or ALT-TAB, to toggle between DESCW and DESCW Help while you work.

You can get help about DESCW Help by choosing **Contents** from the **Help Menu**, then choosing **How to use Help** from the **Help Menu**.

DESCW help main topics

- What's new
- Starting

- What is DESCW
- DESCW elements
- Quick Tour
- Reference manual
- Troubleshooting
- Acronyms
- Ground Stations
- Ordering Products
- Satellites

Selecting Help topics

There are two ways to select Help topics:

- A hyperlink (displayed as an underlined word) opens a new Help page
- A pop-up (displayed as a word underlined with a dotted line) opens a pop-up window containing a short description of the item highlighted.